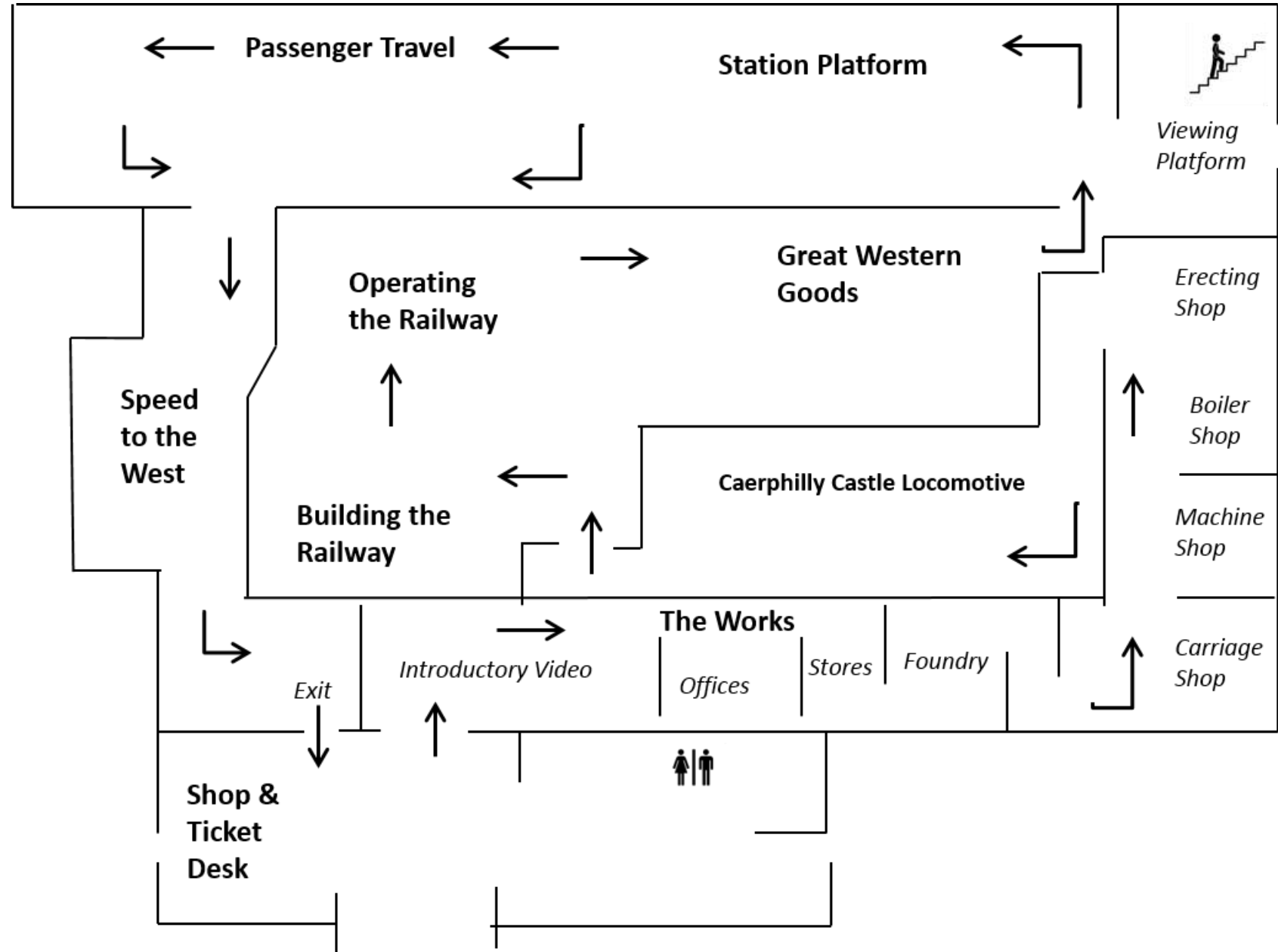




EYFS Self – Guided Visit

The following materials may be useful for staff leading groups of EYFS children around the museum. The materials contain ideas for interactive activities and adult – child engagement. The cards are designed to be read by an adult and shared with the children. The cards can be printed by staff before the visit to use with the children, or the PowerPoint can be downloaded on to your tablet before you arrive at the museum.



1 – The Scraggery (museum entrance)

This man is called Isambard Kingdom Brunel.

A long time ago, he needed to find a place to build locomotives to run on his new train tracks called the Great Western Railway. He built his factory here, in Swindon.

Today, it is called a museum, and it is a place where people can learn about the Great Western Railway.



Look around. What can you see?



1a – The Scraggery (museum entrance)

Which of these is a new train, and which is an old train?

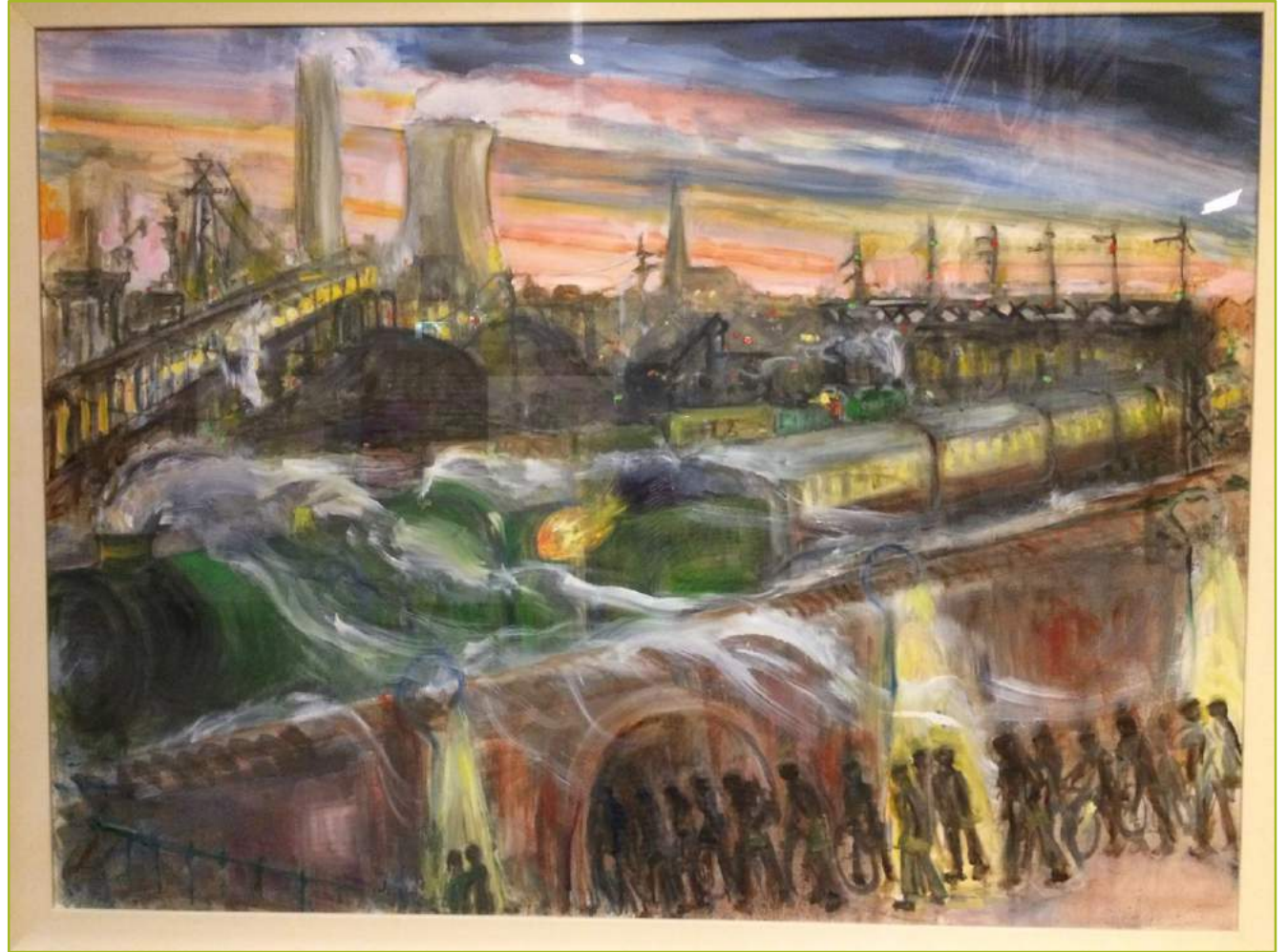


What is different about the trains?

2 – The Entrance

The first part of the museum is a bit dark. But if you look carefully you will find a painting of the Railway Village by Terry Court.

How many people can you count going into the tunnel to get to the factory?



3 – The Offices

Can you guess which jobs the people are doing?

This lady is using a typewriter to write letters.



Look for the tall clock. Can you stretch up high to be as tall as the clock?



4 – The Stores

This is where the factory supplies were kept.



How many of these big brushes can you find?



**Tell your friend what else
you can see.**

5 – The Foundry

This was a very hot place to work. Metal was melted in the hot furnace.



Look for the big spoons, which are called crucibles. How many are there?

These men are having their lunch.



Tell your friend what you like to have for lunch.

6 – The Pattern Shop

Patterns were wooden shapes like moulds that were made to represent the different parts of the engine. They were pressed into damp sand mixed with horse dung.



Some of the Patterns have numbers on. Which numbers can you see?



7 – The Carriage Shop

This is where the train carriages were made.



Look for these things -

A tool box



A wooden hand and foot



8 – The Machine Shop

The big belts on these machines were powered by steam.



Look at the belts going around.



Listen to the noises they make. Can you make some of the noises?



9 – The Boiler Shop

This was the noisiest part of the factory, where they made the big boilers. The boiler heats the water and makes steam, which powers the locomotive.



Look for this number.



10 – Caerphilly Castle

Is this locomotive **BIG** or small?

Walk underneath.



Tell your friend some
WOW words to describe
this locomotive.

11 – Building the Railways

This is a replica of the first locomotive to run on the Great Western railway.
It is called North Star.




Count the wheels on North Star.
How many are there?



12 – Operating the Railway

There were lots of different railway jobs.

 Can you see the engine cleaner, and the engine driver?

Tell your friend which job
you would like to do when
you grow up.



13 – Great Western Goods

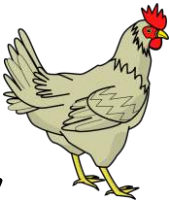
The railways transported lots of different things.



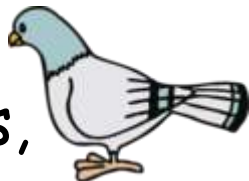
How many sheep,



chickens,



and pigeons,



can you see?



14 – The Station Platform

Can you find the place to buy a train ticket?

These people are waiting for a train.

Can you take turns to sit on the bench, and be very still, just like our mannequins?





15 – City of Truro

Use giant steps to measure the length of The City of Truro locomotive.

How many steps did you count?



16 – Speed to the West

The trains took people to the seaside,
which was very exciting.



Look at the seaside pictures.



Tell your friend where you
would like to travel to on
the train.



Goodbye!

Thank you for coming to visit STEAM
today.

Tell your friend something
that you remember about
the museum.